



## **Guide to the Christie Guest Internet**



## **Purpose of this document**

The purpose of this document to help patients and visitors understand what the Christie Guest Internet is, as well as how to use it

## **Overview**

The Trust offers a wireless internet connection to all patients and visitors to the Trust; this network is known as the Christie Guest Internet.

If you have a wireless device such as a laptop then you can get access to the internet wirelessly anywhere\* in the Trust.

Please note: The ICT Support team will not be able to support patients or visitors laptops. Users are responsible for configuring their own laptops.

## **[Connecting to the Christie Guest Internet](#)**



## Connecting to the Christie Guest Internet

To connect a laptop to the Christie Guest Internet, please carry out the instructions below.

This guide assumes the laptop is running Windows XP and you are using this to manage the Wireless. If your laptop is running anything other than Windows XP then please consult the user-manual that came with your laptop.

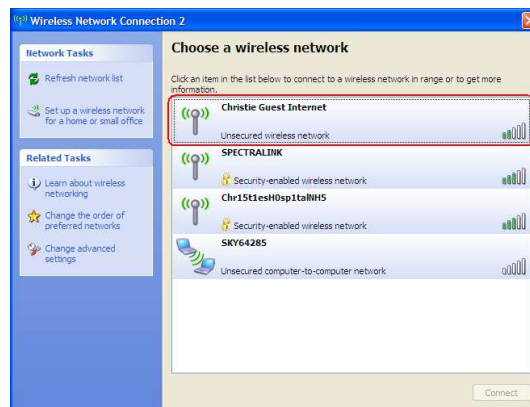
1. **Ensure** that the **wireless option** is **enabled** on the laptop. This is usually enabled by pressing a button on the laptop which has the symbol shown below. If you are unable to locate this button then please consult the user-manual that came with the laptop.



2. **Start** the **Wireless Connection Software** on the laptop by **double-clicking** on the **Wireless icon** in the **System tray** (usually located at the bottom right-hand side of the screen), as shown below.



3. A new window should open showing you a list of wireless networks the laptop has discovered, the **Christie Guest Internet** should be listed as shown below.

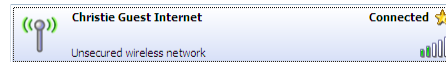


4. **Double-click** on the **Christie Guest Internet**; you may receive a message about connecting to an unsecured network, as shown below. **Click** on the **Connect Anyway** button.

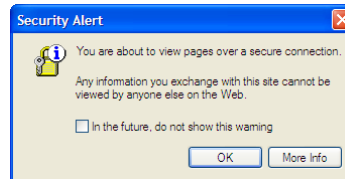




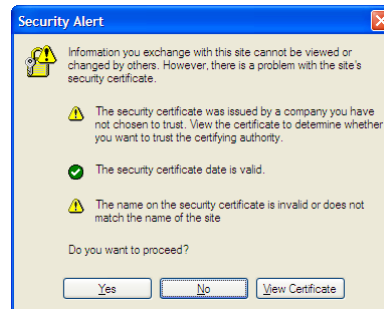
5. You should now see **Connected** next to **the Christie Guest Internet**, as shown below.



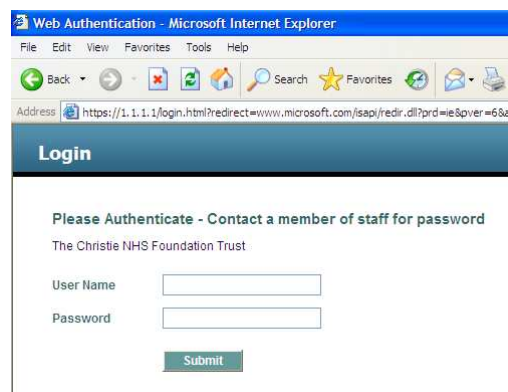
6. **Start your Web-browser** e.g. Internet Explorer. **If you receive a message** as shown below. **Click** on the **OK** button.



7. **If you receive a message** as shown below. **Click** on the **Yes** button.



8. A **Login page** should appear, as shown below.



9. **In the User Name** box type in: *guest*

10. **In the Password** box type in the current password. Please ask a member of the Christie staff to provide you with this password.

11. **Click** on the **Submit** button.

12. You will be taken to the Christie Web-site ([www.christie.nhs.uk](http://www.christie.nhs.uk)). You should now be able to browse the Internet.